



**MediaCityUK**  
Manchester

## Development Opportunities

---

May 2013

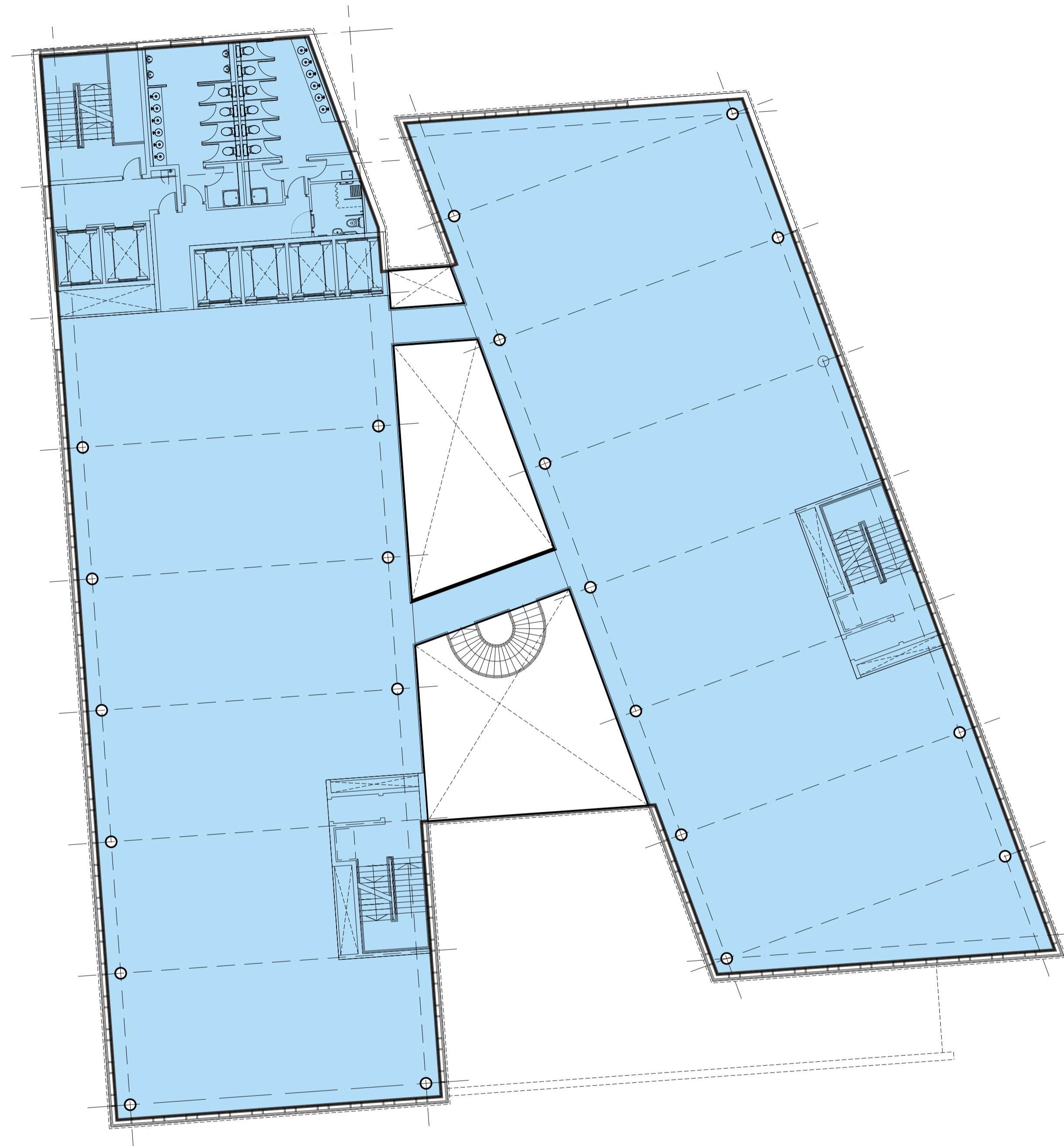
### Erie Basin

---

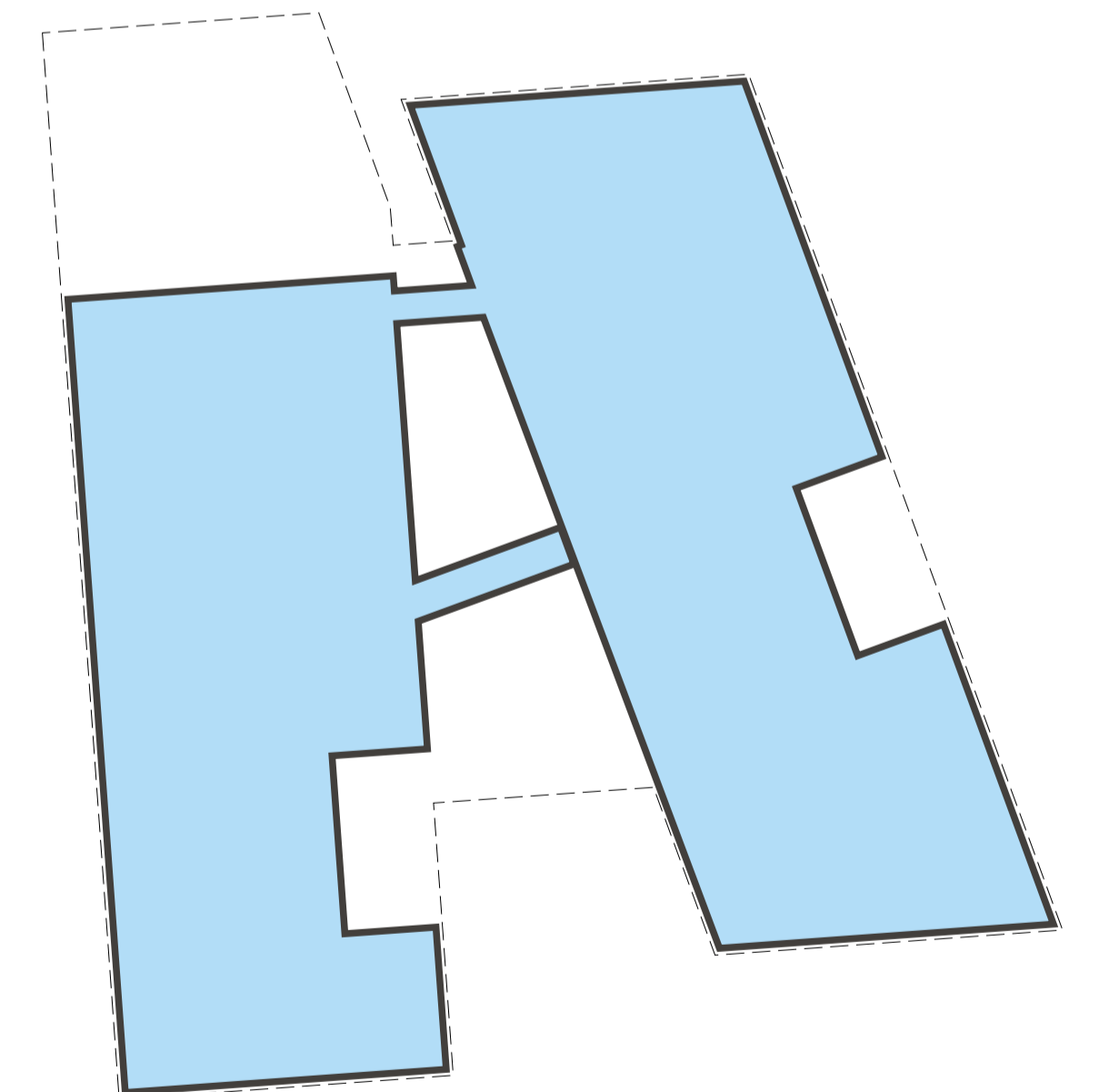
An iconic design for an iconic location, this prime waterside site has full planning permission for a BREEAM Excellent office building with a spectacular atrium overlooking Dock 9.

Plot size: 0.27 hectares





NIA 1,100 SQ.M / 11,840 SQ.FT



ERIE BASIN | FIRST FLOOR







